

Conceptualizing our Regional Environment (gCORE)

September 17, 2011

Judy Cushing
Martha Henderson
Carri Leroy

gCORE: Preparation for MES

To succeed in MES?

- Exhibit graduate level skills:
 - Read critically
 - Write coherently, persuasively, clearly
 - Work collaboratively with peers & faculty
 - Be able to conduct and convey research...
- Have a sense of place...
 - ... the Ecology of the Pacific Northwest
 - Which issues are unique to the PNW?
 - Which are common to other U.S. regions, or globally....and how?
- Understand the curriculum

A Sense of this Place

**gCORE prepares you for MES,
...part of which is the Ecology of the Pacific Northwest....**





From the mountains...







To the prairies ...



... and the deserts ...



The Puget Sound...





the Urban... Suburban ..."Built" Ecology...





Sample Age-Qualified
Planned Community



Ecology, Dams, and Tribal Interests







... Icons of the PNW...







The Impacts of Climate Change







Hanford



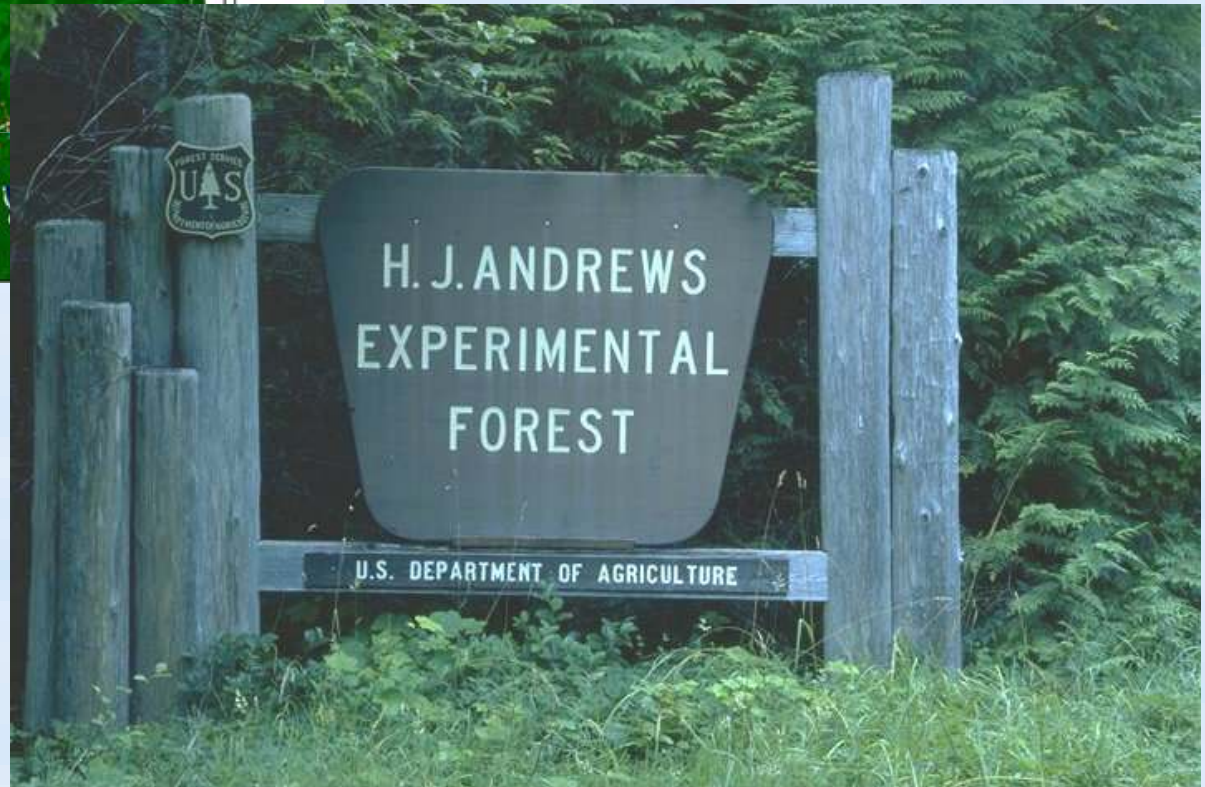
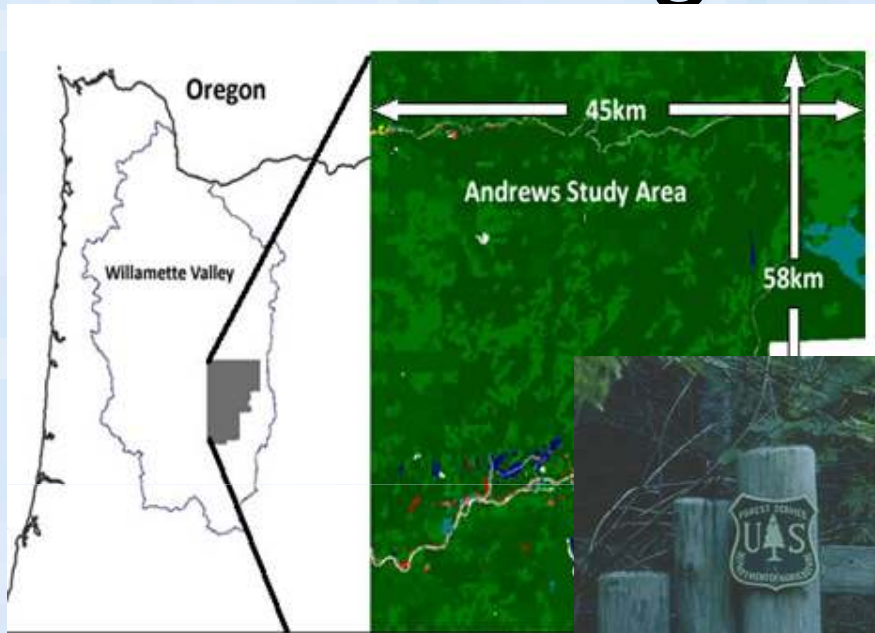
Alternative Energy





Station 6 - Downtown Seattle, WA

The Ecological Observatories





Our Pacific Northwest

Photo Sources

- Kae Hentges
- Kathleen Saul
- bark-out.org
- biology-blog.com
- blog.sustainablog.org
- bvdart.com
- cannonbeach.org
- cnrep.org
- esablwg.com
- examiner.com
- getmarried.com
- grandcanyon.free.fr
- hickerphoto.com
- historylink.org
- huffingtonpost.com
- k7buc.org
- landslides.usgs.gov
- logancullen.wordpress.com
- marincountyfreelibrary.blogspot.com
- nationalgeographic.com
- nmfs.noaa.gov
- old-picture.com
- orangetorpedo.com
- oregonlive.com
- oregonwild.org
- pse.com
- propelfuels.com
- seasideor.com
- seattlepi.com
- usatoday.com
- wallpapers-diq.com
- wikipedia.org
- yahoo.com
- HJ Andrews LTER Photo Archive

The gCORE Web Site

<http://blogs.evergreen.edu/gcore>